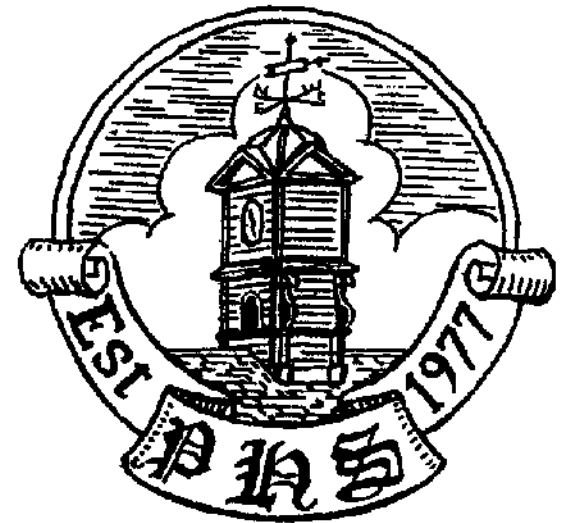


# Dotton History Society



Newsletter Number 44 Spring 2008

## Contents

Society News	2
Forthcoming Programme	7
30th Anniversary of the Launch	8
Secret History of RAF Tempsford, WW2	10
HM Forces Rest Room & Canteen	12
On the Trail of 'JA 1874' – Part 2	14
Potton History Society – How Things Began	17
A Photo in a Biscuit Tin	20
We'll Eat Again	22
Another Czech Story	24

## Potton History Society Committee:-

Chairman	George Howe
Secretary	Jean McLennan
Treasurer	Anita Lewis
Programme/Publicity Secretary	Peter Ibbett
Member	Ken Lawson
Member	Christine Harper
Member	John Boston
Newsletter Editor	Mary Leigh

For access to the archives in our research rooms  
just telephone the key-holders;

Mr G. Howe ..... Potton 260935  
Mr K Lawson ..... Potton 261209  
Mrs J McLennan..... Potton 260234

## Acknowledgements:-

Our appreciation to Camerons Newsagents for selling our books and to Potton Post Office for selling our tea towels.

We also thank the following for their continued support by advertising our meetings;

Lindsay's Bakery,  
Tysoe's Hardware Store,  
Potton Library  
Potton Post Office  
Clayton's Butchers  
Greensands Florists

## Society News

In **October**, over 60 members celebrated the 30th anniversary of the founding of the Potton History Society with a dinner at the Simply Oaks restaurant. Chairman George Howe thanked all those who had contributed to the success of one of Bedfordshire's most successful societies. Peter Ibbett, programme secretary throughout three decades, looked forward to continued progress in the next decade. The evening concluded with old time entertainment by Bustles and Beaux.

In **November** the evening commenced with our Annual General Meeting. The Chairman, George Howe, reported that our 30th year had been one of the most successful with an increase of membership of over 20% to bring us back over the 100 mark. One of the main targets for the forthcoming year is the full indexing of our document files. John Boston and Janet Norman were thanked for their dedication in sorting and indexing over one third of our collection during the last year. The existing committee of George Howe, Jean McLennan, Anita Lewis, Peter Ibbett, Ken Lawson and Christine Harper were re-elected. John Boston was also elected to the committee.

After the business was concluded we welcomed a number of former firemen back to the former Fire Station building, now converted to the Community Hall in which our meetings are held. Peter Ibbett presented a short history of the Potton Volunteer Fire Brigade that was first formed in 1878. The Brigade was taken over by Biggleswade District Council in 1939 until finally fire responsibilities were absorbed by Bedfordshire County Council after the last war. A presentation by Paul Duffin, from the Potton Community Fire Station, showed the changes in the Fire Service over the last 30 years as well as some of the incidents attended. The standard of equipment and training has become more sophisticated to match the increasing range of incidents that the force is expected to deal with.

Chairman George Howe and programme secretary Peter Ibbett celebrated 30 years of collecting material for the Society archives by presenting a slide and video show covering three decades at the **December** meeting. The slides showed the loss of some buildings such as the old infants school and the growth of new housing. They also showed the range of people who have contributed to the community spirit of the town, some of whom have given their names to streets and areas of the town. Film and video clips showed Society archives and personalities as well as local celebrations. Agricultural equipment and activities at the Fire and Railway stations were also featured. The Society is always happy to receive or copy and return any items with a Potton connection. Please contact [pjibbett@aol.co.uk](mailto:pjibbett@aol.co.uk)

A full house at the **January** meeting welcomed Neil Rees of the Czech Government in Exile Society. After the German invasion of Czechoslovakia a number of local country houses became host to displaced Czechs and their exiled Government. Tempsford played its part in providing secret flights into occupied territory. The volunteers sometimes found Everton Village Hall a quiet place before their mission. Plaques in the hall and in the disused airfield barn commemorate their bravery. Eight missions were flown into Czechoslovakia between March 1941 and January 1943. A Potton document records £7.12s.4d as proceeds from a Czech concert held in the Central Hall in aid of HM Forces rest room and canteen (see pages 12&13 of this newsletter). Over 5,000 Czech men were enrolled in units such as the Pioneer Corps of the British Army. A section of this is recorded on the accounts document at Sutton Park. The Society would be interested to receive any further information about local activities in the last war. For more on the Tempsford story see page 10.

At our **February** meeting we were treated to a history of Hazzels Hall on the Sandy Everton border, presented by Barry Groom. The

present house has its origins in the Tudor era and has been rebuilt and extended over the years. The current Georgian style building was enhanced by the work of landscape designer Humphrey Repton in the late eighteenth century. The Pym family has made notable contributions to the area as County Officials and MP's over the years with the late Francis Pym rising to Foreign Secretary in the 1980's. Over the last century the House has seen many changes including wartime duties and Hospital use. The house has now been restored and with new buildings in the grounds the Pym connection with the area looks set to continue into the future.

Anita Lewis entertained us in March with a look at the skill and beauty of Victorian samplers and the fascinating insight they give us into the social history of their time. Embroidery had been a popular leisuretime occupation among the well to do for several centuries but by Victorian times it was essential for many girls to learn the art of stitchery in preparation for their future roles in the home or 'in service'. As well as needlecraft, the creation of samplers taught girls to read and write and gave them a knowledge of the bible through the lengthy texts they embroidered. We are fortunate in our area to have one of the finest collections of samplers in the Fitzwilliam Museum at Cambridge, thanks to two important bequests from avid collectors in the early 1900's. Don't miss it!

---oo0oo---

### **The Gravel Pit near the Church, Hatley Road.**

I would like to thank one of our members, Bob Woolven, for making arrangements and informing me about a dig that took place behind the scout hut last December. The Bedfordshire and Luton Geologists, under the leadership of Beverly, cleared various bushes, ivy, etc from a small cliff face about 20 feet high by 60 feet long. This revealed the various layers of sandstone, colours of sand and old sand martin's nests. It was hard graft for the small team and inevitably it rained. It never dampened their spirits though, as they carried on in the wet. I managed some photographs for the history society, which was the reason I was informed, to record the event.

Beverly requested any information we might have about the pit. A combination from Norman Parry's Report No. 5 on Enclosures and some information from the Vestry minutes in the Bedford Record Office produced the following:-

The routes of the various roads through the parish having been established, it was necessary to provide materials to maintain them. The responsibility for the roads, with the exception of the turn pikes, rested with the annually elected Surveyor of the highways who, by levying a rate and by using labour from within the community, endeavoured to maintain the roads to the standards demanded by Quarter sessions. The Enclosure Award set aside three small areas of land from which sand and gravel could be obtained as and when required, all of which were close to the town. The first area of 1.75 acres was alongside Hatley Road opposite the church - the pit referred to in this article and possibly opened about 1812. In 1839 this gravel pit was exhausted and in 1840 they started to fill it in. Information similar to this will be provided below the cliff.

I believe when it became level but still a bit below road level it had top soil added and was cropped for many years. Local information is that a Mr. Wright worked this land before the Scouts took it over. The Potton Scouts placed a hut for their headquarters on this land and that is its use to this day.

George Howe.

---oo0oo---

### **The Family Tree**

Ken Lawson, Jean McLennan and I receive a few enquiries during each year from people, mostly abroad but also from this country, asking for information on their ancestors who lived in Potton over the years. Some just lived in Potton for a few years, maybe had a child or two, and then moved on. Others were old Pottonians and their family name still carries on today.

We have decided that not only should these enquiries be filed as a correct thing to do but also they should be filed into family order,

which will ensure that we keep both the information given to us in the enquiry and in the reply we send. This will help build our family files and contribute to the bigger picture of Pottonian's, which could be of interest to any future genealogists.

Occasionally an enquiry might have a little memory or story of Potton and with the permission of Mr L.C. Whitbread, I give you below extracts from his enquiry. He is researching the Judge family who kept the Post Office and jewellers shop on the Market Square in the 1920's. He remembers staying in Potton around 1927 and climbing up to the big clock at the top of the tower in the middle of the Market Square with his grandfather Thomas Judge, who used to wind the clock with a big iron key. Mr. Whitbread has recollections of the fire engine drawn by two horses galloping down the road when called to a fire. Also the terrible smell from the tanning works just down the road.

His mother Maud Judge, daughter of Thomas, unfortunately died of cancer when he was five and he was sent away to stay with relatives. She is buried in Potton cemetery opposite the grave of his Grandfather, Grandmother, and several of their children. A lady called Eva who was Mr Whitbread's mother's cousin looked after him at the Post Office around this time. She met her husband on a Sunday school outing from the Potton Methodist church when a driver of the charabanc was Owen Watkin, later Managing Director of A.W. Watkin Ltd, Shortmead Street, Biggleswade, now sadly gone. Mr. Whitbread's father's brother, Harry Whitbread took over the Post Office from Thomas Judge.

What a lovely story, and one which also contributes some factual information on Potton's past.

George Howe

*Personal memories like these really bring the past to life for me, in a way that no history teacher was ever able to do. Let us hope that there are still a few more old Pottonians out there (or even young ones) who will share their memories with us. Ed.*

## Forthcoming Programme

- May 22<sup>nd</sup> John Bunyan Pastor Stan Evers**  
**A Pilgrims Journey**  
Our local Baptist Minister looks at the life and times of one of Bedfordshire's most famous men
- June 26th Potton Pub Evening NB. 7.30pm start**  
Our town was once infamous for the number of public houses in the parish. A walking tour will start at 7.30pm whilst a sit down presentation will start at 8pm. Both groups will join up at 9pm.
- July 24<sup>th</sup> Potton Footpath Maps**  
A look at older maps and modern walk leaflets to reveal how our local paths are being used. We hope to launch our latest walks leaflet.
- Aug 28<sup>th</sup> Potton Much Manured**  
Potton once had four Manors. Our archive collection has a range of manorial documents including many from 'Potton Much Manured'
- Sept 25<sup>th</sup> War Torn Skies Over Julian Evan-Hart**  
**Bedfordshire**  
Julian is at the forefront of aviation archaeology researching aircraft crashes. He has a number of books to his name and is actively working on our county, where the Potton area had several wartime crashes
- Oct 23<sup>rd</sup> Sutton Park and the Burgoynes Chris Walker**  
The Burgoynes were once Lords of Potton Manor. What is known about the family and their house which is now home to a golf course

### 30<sup>th</sup> Anniversary of the launch of Potton History Society.

*A summary of the speech given by Peter Ibbett at the 30<sup>th</sup> Anniversary Dinner of the Society held at Simply Oak Restaurant on 25<sup>th</sup> October 2007.*

Potton History Society was launched 30 years ago, in 1977. This was a time when Local History was starting to become popular. Our ship was built to a unique design from plans devised by Mrs Yates. She was given valuable assistance by her husband, Ralph Yates, who contributed a great deal to this Society in its early days.

LHS (Local History Ship!) Potton was designed with elements of a polar icebreaker and Darwin's Beagle. Its mission was to set out to break through the uncharted waters of Potton's history, to collect all it could find and to return to port so that the new knowledge could be analysed to discover the truth about our origins.

Captain Parry took the new ship out on its first voyage with an untried crew and a small number of brave passengers. The ship proved more than seaworthy, picking up extra crew and passengers and bringing home a haul of material that found its way into the first of three picture books.

LHS Potton began a series of ever more fruitful voyages with its captain charting the way with Record office files and the eagle eye and camera of Trevor Ball at the lookouts perch on top of the mast to help him.

The passengers were becoming a more numerous and varied lot, some of whom started to put their talents towards helping the crew cope with an ever increasing amount of material that was being collected. Some of it found its way into a regular newsletter expertly organised by editor Mary Leigh. Indeed without such a friendly and supportive set of passengers LHS Potton might have sunk under the weight of its discoveries!

When our second captain stepped off the platform and crossed over the dock to the gangplank of his new command, the crew thought that life might become a little less demanding. Little was further from the truth! Captain Howe had not one but two telescopes at the same time! A vigorous programme of refurbishment saw LHS Potton acquire new items on its superstructure and an expanded set of visits and tours for its passengers. There was much sweat down in the boiler room. Mrs Yates and Captain Parry believed firmly that 'If a thing was worth doing it was worth doing it well', whilst Captain Howe believed that if something was being done well it was time to plan and organise the next two things that needed doing! Captain Howe leads by example and this Society owes him a great debt for keeping LHS Potton on an even keel.

We have found out a great deal about the history of Potton but what we have learnt is that there is still much more to find out. We never anticipated the extra work the digital era would bring. Victorians wrote it all down in books which last. We recorded material on the latest floppy discs in the 1980's which is now unreadable and we have to re-record on the latest digital technology which itself may be obsolete in 20 years time! This all takes time.

We are 30 years young ... not 30 years old. We have our expanding archives and are spending a lot of time indexing and digitising the material to turn it into a useable resource for the local community. We will need as much effort in the next decade as in the last to secure our foundations and build on them for future generations.

All are welcome down in the Boiler room to help LHS Potton to continue its voyages and add to our knowledge of Potton.

Peter Ibbett

## A Snippet of the Secret History of RAF Tempsford during W.W.2

Source of information 'Agents by Moonlight' by Freddie Clark.

Under the heading 'Aircraft and Crew Losses' the details give the crew, date, Squadron (138 and 161) and type of aircraft, also brief details of missions from October 1940 to May 1945. The total aircraft lost over that period were Whitleys - 25, Lysanders - 17, Halifax - 93, Hudson - 13, Liberators - 1, Lancasters - 2 and Stirlings - 20. A total of 171 aircraft lost! Crew and agents killed amounted to 681!

Not all crew were on a mission over enemy territory, some were on home training flights. One in particular was most unfortunate. On 19th June 1943 a W/O S Klosowski of the Polish Air Force was on a training flight in Halifax W1229. He crash landed in a strong cross wind, no injuries but the aircraft was written off. Then on the 22nd June (3 days later) he took up another Halifax on a training flight and on attempting a three engine landing, crashed into one of the hangers. Again no injuries but this aircraft was also written off. Checking through this section I found no further mention of S Klosowski. (It is to be hoped that his luck had changed).

Earlier on the 14/15th March 1943 - most ops' have two dates because they leave Tempsford in the evening and land the next day - two missions to Czechoslovakia set off, S/Ldr C.F. Gibson DFC was piloting Halifax BB281 and F/Lt A.E. Prior DFM Halifax DG 245. Both aircraft crashed near Munich, all 15 crew were killed and are buried in Dumbach Was Cemetery, Germany.

Two other missions were also operating that same night, one to Poland - crashed in Denmark - and the other on it's outward journey on operation DIRECTOR 34, (possibly South of France), this crashed at Fawley, Bucks. Two killed and 4 injured. Total casualties that night, 24 killed, 4 injured.

16/17th December 1943 was another tragic period, it seems that fog was the main factor. Eight aircraft crashed, 6 Halifax and 6 Lysanders, 24 were killed and 25 saved. All the aircraft crashed in England. Three of the Halifax planes crashed round the Felixstowe area, one hit a Radar mast at Bawdsey and crashed into the River Deben, another in the sea off Harwich and the third one in the sea off Felixstowe.

This reminded me of my model of Potton Shambles. I was on the beach at Felixstowe looking for some tide washed, graded sand to the scale of the cobbles for my model when I spotted a piece of aluminium from the frame of an aircraft. I picked it up. It's home is now in our Society Rooms. I wonder, could it have come from Halifax LL119? Happy to say, all 7 crew survived that crash. It would be nice to think that part of that Halifax also made it home from Felixstowe.



The sketch I drew from a photo shows Gibraltar Farm (now demolished). It is not shown on today's maps. Old (1835) map reprint, sheet 53, clearly shows the position of this farm along the west side of the track of the old Roman Way from Sandy. Aligning this with the map of the airfield - in the above publication - shows the taxiing route to the main No. 1 runway off to the right. The barn to the left of the square roofless building in my sketch is where the agents were made ready for their flight.

Keith Lawrence

H. M. Forces  
Rest Room & Canteen

CENTRAL HALL, POTTON

FRANK C. COX,  
Printer & Stationer,  
POTTON, BEDS.

STATEMENT  
OF  
ACCOUNTS

JUNE, 1940 to SEPTEMBER 16th, 1945

Chairman: Rev. H. T. PIMM, M.A.  
Hon. Secretary: Mr. F. T. COX.  
Hon. Treasurer: Mr. G. H. SHARMAN.  
Hon. Caterer: Miss A. BARTLE.

STATEMENT OF ACCOUNTS

June, 1940 to September 16th, 1945.

RECEIPTS		PAYMENTS	
	£ s. d.		£ s. d.
To Cash Collected in Potton to form Canteen	19 14 4	By Food	1439 9 11
Proceeds from Czech Concert	7 12 4	Chocolate	374 3 11
		Tobacco and Cigarettes	454 3 1
		Razors and blades	24 8 0
		Boot Polish	4 18 3
Sales	3721 10 0		2297 3 2
		EXPENSES	
		By Rent of Central Hall	184 10 0
		Heat and Light	261 0 1
		Canteen	184 3 6
		Repairs	7 19 6
		Rates on Central Hall	11 2 10
		Petty Expenses and Sundry Goods	189 12 1
			838 8 0
		DONATIONS	
		Made during the working of Canteen	
		By M. U. B. C.	30 0 0
		R.A.F. Benevolent Fund	50 0 0
		Aid to Russia Fund	50 0 0
		Red Cross & St. John's	75 0 0
		Bedford Hospital	20 0 0
		Cambridge Hospital	20 0 0
		Pioneer Coy. Sutton Park	10 0 0
		Potton Forces Fund	115 0 0
		Cpl. W. C. Bates (Grant)	3 0 0
		Toward repair Central Hall Billiard Table	5 0 0
			378 0 0
		BALANCE ALLOCATED	
		By King George VI Fund for Sailors (Merchant Navy Section)	60 0 0
		Sailors, Soldiers & Airmen's Families' Association	175 5 6
			235 5 6
			£3748 16 8

I have examined the above Accounts, dated September 16th, 1945, with the Books and Vouchers of the Canteen. I have obtained all the information and explanations I have required, and in my opinion such Accounts are properly drawn up so as to exhibit a true and correct state of the Canteen affairs.

March 25th, 1946.

E. A. BAXTER, Auditor.  
Potton.

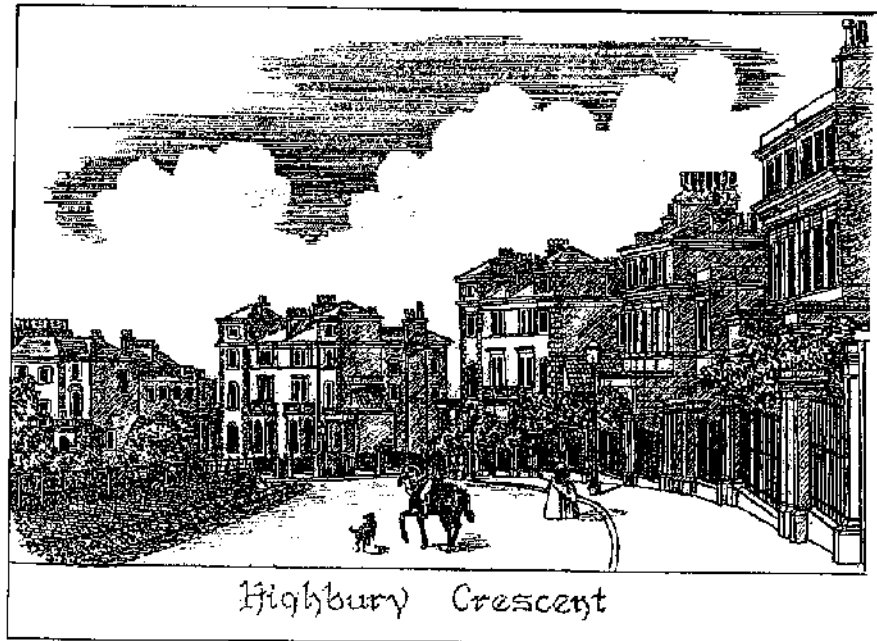
Neil Rees, in his talk about Tempsford, mentioned that Czechs were drafted into the Pioneer Corp. of the Army. He knew of one concert party at Woburn but the document mentions a Pioneer Coy at Sutton Park.

The above leaflet was popped through Ken Lawson's letterbox from an unknown donor. Has anyone any knowledge of wartime activity in the area involving Czechs or memories of the events mentioned in this document?

## On the Trail of 'JA 1874' – Part 2

*The first part of this story of research into the identity of the artist of two paintings of a former Potton Manor House found the author travelling to Kettering to seek advice from experts at the BBC's 'Antiques Road Show'. As they could offer little in the way of help, Keith had to find new sources of information, which you will soon discover.*

Knowing that Mr. James Wagstaff had resided in the Islington area of London, prior to the New Manor House being built in Potton in the late 1860s, I enquired of a possible local artist from a Christopher Sweeney (no relative of the notorious Mr. Todd) at Islington Local History Centre at Finsbury Library. Yet again I drew a blank. However, I did establish from his search confirmation that Mr. James Wagstaff had turned up in the suburban directories as residing at Highbury Lodge, 1, Highbury Crescent, Islington - quite a notable area, as shown in a contemporary picture which he sent to me.



For a while the trail seemed to have gone cold, but I recalled a further line of enquiry by seeing if it was possible to identify the hand of the writing on the painting of the rear view of the Old Manor House. A long shot because 'stylized' writing is very difficult from which to distinguish a person's normal hand.

Fingers crossed, I went to the Archive office at County Hall, Bedford, where I trawled through several local papers on microfiche. Then in September 1916's issue of the 'Bedfordshire Times and Independent' I found a reference to Potton. There it was, quote:-

POTTON. 'The Old Manor House'. At an auction sale conducted by 'Messrs Dilley, Son and Read', at Huntingdon last week by the direction of the executors of the late Rev. G.W. Bidwell, a pair of pictures, "The Old Manor House, Potton" realised £7.15s. a Louis XV circular table fetched £590. unquote.

A glimmer of light appeared as I realised a Rev. W.C. Bidwell was a vicar at St. Mary's Church, Potton from 1845 to 1876! He would have known the Old Manor House and James Wagstaff's family very well indeed. Could I find an example of his hand writing, or even a match, in the records of St. Mary's, even so it seemed doubtful because of the 'stylized' script. Still at the Archives, I looked through the 1871 census for entries of the Vicarage and there was the Rev Woodward C. Bidwell and his family. With luck their son George W. Bidwell, 22 yrs, occupation BA Cambridge, was in residence at the time. Bingo! Yes, the son, Rev. G.W. Bidwell was the deceased owner of those two paintings in that sale at Huntingdon and must have been left them in his father's will.

It must be mentioned here that the census only records those in residence at the time of the census - could it be that another member of the Bidwell family was away at the time? Because in my search

to put a name to the artist, others have suggested alternative possibilities to J.A.1874 . . . Could it be J.B or even J.P? I've yet to follow that path.

Now, it is my assumption that when Mr. William Smith purchased the Potton Manor in 1915 from Gouldthorpe Smith, he would have been enthusiastic about anything to do with the history of his new purchase, so when these two paintings came up for sale at Huntingdon in 1916 he would have been eager enough to have bid for them. If so, this acquisition now completes the link to his daughter, Emilie Gladys Lind (Queenie) Smith.

At one stage, about the late 1930s the pictures were resurrected and the frames given a coat of gold varnish. However, this doesn't last too long and the frames soon lost their lustre and were then consigned to the attic where serious deterioration took place. When Emilie passed away in the late 1990s, having lived for over a hundred years, the pictures came to light again and into the ownership of Mr Eric Jakes. It is thanks to him realising their historical significance that now, refurbished, they are secure once more after 135 years and a treasured part of our Potton History Society Records.

Although I've lived in Potton for a short period I'm not a Pottonian. However, this has been a fascinating trail to follow and I hope that someone may finally name that elusive artist. Who knows, he or she may be just around the next corner. So seek out any old records or pictures, they may have an interesting story to tell.

For reference, an article by Mr Eric Jakes, published in our P.H.S. Newsletter No.13, Spring 1992, is a tribute to 'Emilie Gladys Lind Smith, 1888 - 1991'. It is thanks to Miss Queenie those two pictures are with us today.

Keith Lawrence. 2007

## Potton History Society - How Things Began

Although I was unable to attend the celebrations connected with Potton History Society's thirtieth anniversary last October, George Howe kindly provided me with a private viewing of the excellent DVD recording taken by Peter Ibbett of the evening's events. Thus the arrangements connected with the formation of the Society were brought to mind. These I have decided to share with you as a reminder to some and as information to others who have become members more recently.

A public meeting was held in the autumn of 1976 to discuss the possibility of celebrating the Queen's Silver Jubilee in 1977. Under the Chairmanship of Douglas Coombes, my husband and I were appointed Vice Chairmen. One of my tasks was to research the details of previous celebrations in Potton in connection with Coronations and Jubilees. Those of 1935 were well remembered, but old scrapbooks of newspaper cuttings revealed that the Town had been celebrating in splendid style such events from at least 1838. As the 1977 brochure shows, an exciting programme was arranged. At a following public meeting the resulting profits of £726.23 were offered to the Town to provide a lasting memento of Potton's loyalty.

Failing to receive any practical propositions, the Committee's suggestion of financing the publication of a book entitled 'The History of Potton' was put forward and accepted. I had previously been asked by Douglas Coombes that, if required, I would be prepared to work on such a project. Although I had agreed in principal, I had expected that suitable suggestions would be offered. None were forthcoming. It was then proposed that the money be put into a Trust Fund to support such a publication. Three Trustees were appointed in accordance with the position they held in the town, namely, the Chairman of Potton Town Council, The Headteacher of Burgoyne School and the Manager of Lloyds Bank, together with two others. I was appointed Secretary.

Hoping that others would be interested in local history, I called a meeting on October 13th 1977 to consider the possibility of forming a History Society. After listing the aims of such a society and showing examples of archival material, Margaret Gardner, Headteacher of Burgoyne School, Peter Ibbett, Eric Mayston, Norman Parry, Rex Whitfield, Patricia Yates and Ralph Yates, volunteered to serve on a planning committee which met on October 25th. Official appointments were made and possible speakers and subjects to be covered at the monthly meetings were suggested. The newly formed Society was most grateful to receive the profits from a concert specially arranged for the purpose by Douglas Coombes and his wife Carole Lindsay Douglas.

The Trust Fund, registered as a Charity, functioned separately. It was agreed by the Trustees that money from this fund could be used to pay for the copying of old photographs which we could borrow from their owners and return. Vera and Norman Parry were involved in this work with much success. Trevor Ball photographed current events, new developments and architectural features in the Town, which became an important feature in our archives. Displays were arranged at monthly meetings and public events and continue to be greatly appreciated.

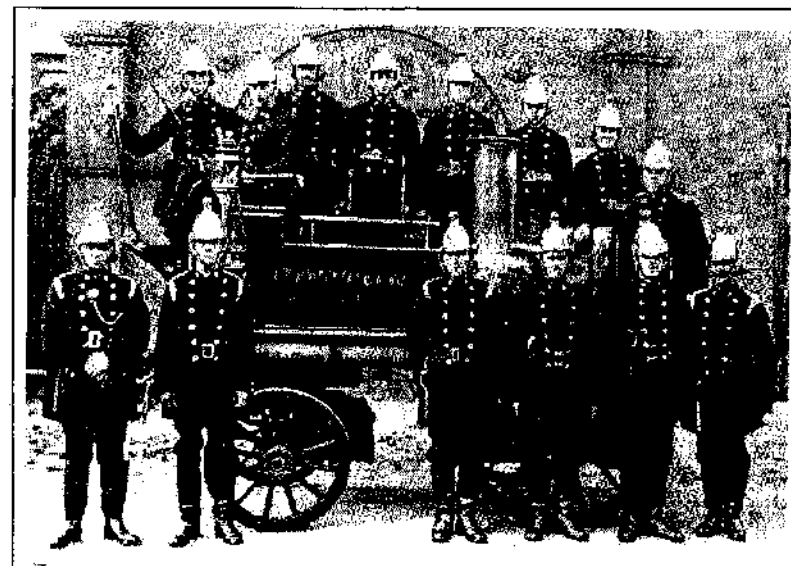
Agreeing that a picture book would have more appeal than a book of facts, Picture Book 1, containing 150 photographs from our collection, was devised by Patricia Yates and published in 1981. It was an instant success. Volumes 2 and 3 followed. The printing costs of 'The Great Fire of Potton' and 'Potton Market Square', both by Peter Ibbett, were funded by the Trust. All profits from sales were paid into the Trust Fund. Those who worked on the publications did so without payment.

The Charities Act of 1992 allowed the transfer of assets from one small charity to another with similar aims. A proposal from Potton

History Society to take over the assets from the Trust Fund was presented to the Trustees at their AGM on February 22nd 1994. This proposal was agreed unanimously. After obtaining from the Charity Commissioners the necessary permission, £543.25 was transferred to the Society on July 5th 1994. A financial report of the Trust Fund had always been available at the Town Council's AGM. At the time of the hand over of the Trust Fund, 5,000 photographs had been mounted and captioned. Without the proceeds of the Silver Jubilee celebrations, it would have been difficult to finance such a wonderful collection, which has continued to grow, providing instant information to viewers.

Much more needs to be written about the extensive development of the Society, the use of modern equipment to ensure the lasting care of photographs and slides and the ongoing indexing of the ever growing archive material. All is due to the hard work undertaken by many during the last thirty years. May such work long continue.

Patricia R. Yates.



Potton Fire Brigade, C 1926, standing in front of the old fire station. One of the photos which can be seen in Picture Book 1.

